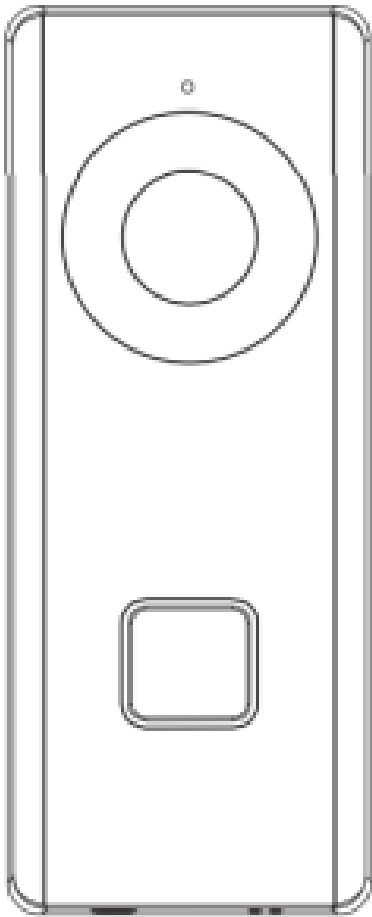


DMP V-4060DB Video Door Bell Installation Guide

November 5, 2021 November 8, 2021

[Home](#) » [DMP](#) » DMP V-4060DB Video Door Bell Installation Guide 

DMP V-4060DB Video Door Bell



Contents [[hide](#)]

1 DESCRIPTION

1.1 Compatibility

1.2 What is Included?

2 PREPARING VIDEO DOORBELL FOR INSTALLATION

3 INSTALLING THE VIDEO DOORBELL

4 SET UP DOORBELL IN DEALER ADMIN

5 CONNECT DOORBELL TO WI-FI USING VIRTUAL KEYPAD APP

6 ATTACHING THE FACEPLATE

7 ADDITIONAL INFORMATION

8 CONNECTING THE DOORBELL TO AN NVR

9 CHANGING SSID OR PASSWORD

10 V-4060DB VIDEO DOORBELL

10.1 Specifications

10.2 Compatibility

10.3 Accessories

11 Documents / Resources

11.1 Related Manuals / Resources

DESCRIPTION

The V-4060DB is a 2.4 GHz Wi-Fi enabled video doorbell capable of recording and storing video clips that are viewable on the Virtual Keypad™ App.

The V-4060DB provides 16 GB of storage on a pre-installed SD card for local recording.

Compatibility

- Virtual Keypad™ App 6.18 or higher for iOS and Android devices

What is Included?

- V-4060DB Video Doorbell
- Pre-installed 16 GB SD card
- Four different color faceplate options
- Power Connector
- Hardware Pack
- Power Booster

PREPARING VIDEO DOORBELL FOR INSTALLATION

1. Remove the clear plastic film on the lens of the camera and and the clear plastic film on the IR light referenced in Figure 2.

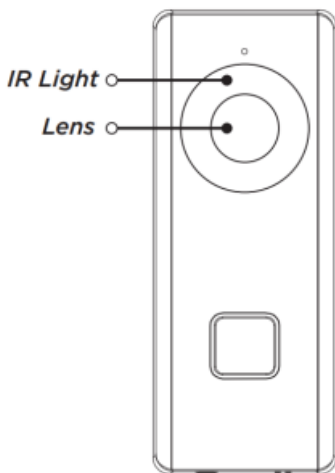


Figure 2: Lens and IR Light Location

2. Remove the doorbell faceplate.
3. Place the rubber gasket on the back of the doorbell as shown in Figure 3.

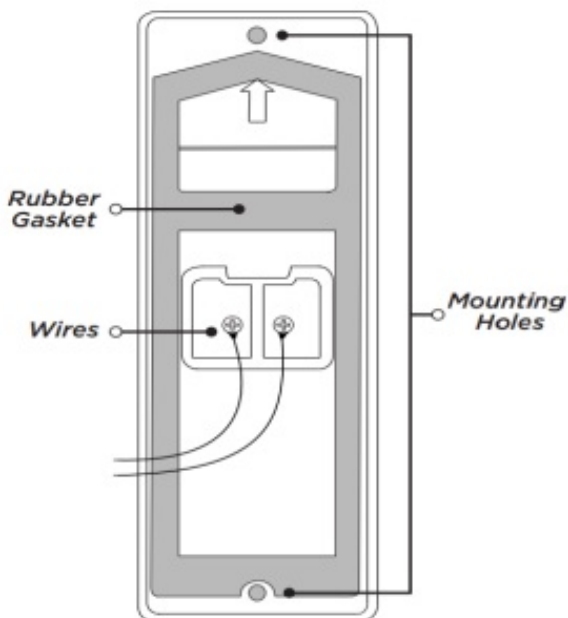


Figure 3: Connecting the Power Cables

4. Remove the screws on the rear panel of the doorbell. Place the circular end of the provided power cables around the screws and reconnect them to the doorbell.

INSTALLING THE VIDEO DOORBELL

Replacing Existing Doorbell

If you are replacing an existing doorbell, you must install the included power kit to the existing mechanical chime. The power kit ensures that the video doorbell receives the power it needs.



Caution: Turn off the breaker supplying power to the mechanical chime and where the video doorbell will be installed.

1. Remove the existing doorbell from the wall, leaving the existing wiring exposed.
2. Remove the provided clear adhesive mounting template from the yellow paper and align **Hole A** with the cable hole on the wall. This is where the existing wiring will connect to the new doorbell.
3. Drill through the two holes marked **Hole 1** on the mounting template. This ensures the doorbell can be installed accurately. For wood installations, use a 1/16" drill bit. For masonry installations, use a 7/32" drill bit. Use the included white anchors if necessary.
4. Connect the exposed wiring to the video doorbell power leads.
5. Mount the video doorbell body to the wall with the two included long screws.
6. With the breaker supplying power to the mechanical chime still off, remove the cover from the mechanical chime.
7. Loosen the screws on the provided plastic screw terminal. Insert the red and black crimped ends of the wire and tighten them down.
8. Insert the white connector end of the wires to the power booster.
9. Loosen the TRANS terminal on the mechanical chime and connect the short end of the red wire to it.
10. Loosen the FRONT terminal on the mechanical chime and connect the short end of the black wire to it.
11. Once the power kit has been installed, mount the screw terminal and power kit within the mechanical chime housing using the adhesive backing and replace the cover.
12. Turn on the breaker to the part of the home where the video doorbell and mechanical chime are installed.

Failure to install the power kit may result in the following:

- Your chime sounds faint or makes a humming noise.
- Your doorbell reboots unexpectedly.

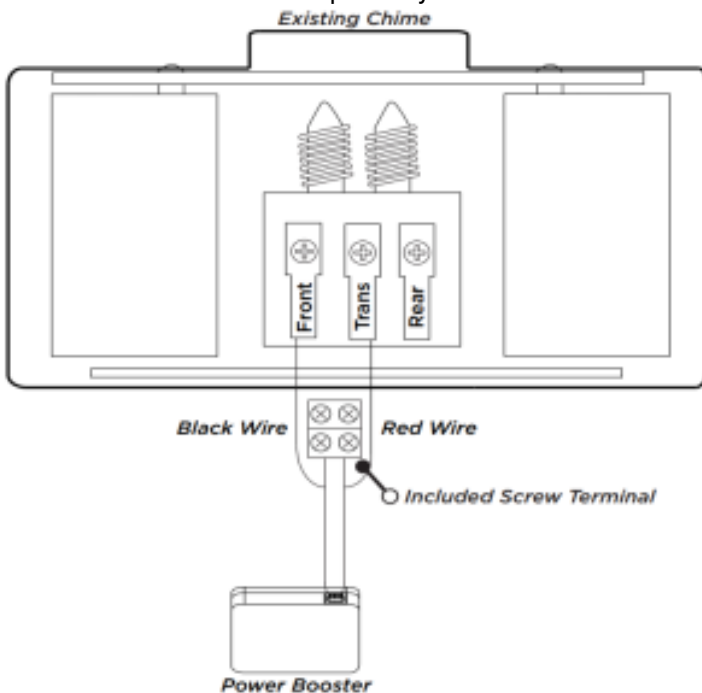


Figure 4: Installing the Power Kit

New Doorbell Installation

If you do not have an existing doorbell and plan on using a transformer (in-wall or plug-in) then you must use the included resistor. The power must come from a low voltage transformer with 16-24 VAC.



Caution: Turn off the breaker supplying power to the area that the video doorbell will be installed.

1. Place the adhesive mounting template where you want the doorbell to be installed. Drill a hole through Hole A for wire routing.

2. Drill through the two holes marked Hole 1 on the mounting template. This ensures the doorbell can be installed accurately. For wood installations, use a 1/16" drill bit. For masonry installations, use a 7/32" drill bit. Use the included white anchors if necessary.
3. Route the wires from the power source through the center hole and connect the included resistor to one of the wires.
4. Connect the power leads from the video doorbell to the power source.
5. Align the screw holes at the top and bottom of the doorbell with the drilled holes in the wall.
6. Mount the video doorbell to the wall with the two included long screws.
7. Restore power to the part of the home where the video doorbell is installed.

SET UP DOORBELL IN DEALER ADMIN

1. Log into www.DMPDealerAdmin.com.
2. Select the appropriate system for the V-4060DB Video Doorbell.
3. On the System Information screen under Add-On Features, check the Video Doorbell box. This will enable the doorbell to sync with the Virtual Keypad App.

CONNECT DOORBELL TO WI-FI USING VIRTUAL KEYPAD APP

The video doorbell requires a 2.4 GHz Wi-Fi signal. It does not support 5 GHz Wi-Fi.

1. Upon completing the power up sequence, the doorbell will announce it is ready to be configured. If no action is taken within three minutes the video doorbell will exit Wi-Fi configuration mode. Reset the video doorbell to restart Wi-Fi configuration. This can be done by pressing and holding the **RESET** button located on the bottom left side of the video doorbell for 20 seconds. The doorbell will announce when reset sequence is complete.
2. Log into the Virtual Keypad App and go to the **Doorbell** tab.
3. Tap **Setup Doorbell**.
4. Scan the QR code on the front of the video doorbell. Suggested scanning distance is 2-4 inches.



Note: If the device is not able to read the QR code, you will be given the option to retry scanning the code or manual entry. If you select manual entry, enter the Serial Number and Verification Code located on the front of the video doorbell.

5. Select **Configure Wi-Fi**.
6. Ensure your phone is connected to the Wi-Fi network the video doorbell will use. This allows the doorbell to automatically inherit your Wi-Fi network. The Virtual Keypad App will prompt you to enter the password for your Wi-Fi network. Press **Continue**.
7. A QR code then appears on your device screen. Hold the QR code in front of the doorbell. Suggested scanning distance is 2-4 inches. The doorbell will produce a single audible beep once the QR code has been read. Press **Continue** in the Virtual Keypad App after you hear the doorbell beep.
8. Give your doorbell a name and press **Finish**.

ATTACHING THE FACEPLATE

Whether replacing an existing doorbell or installing new doorbell, the faceplate for the doorbell should be attached last.

1. After the doorbell has been connected to the Wi-Fi network, attach the faceplate to the doorbell body.
2. Use the included short security screw to fix the faceplate to the doorbell. See Figure 6.

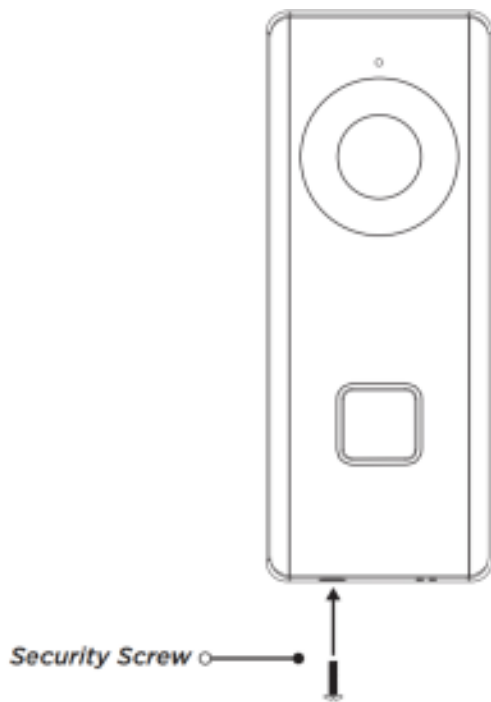


Figure 6: Attaching the Faceplate

ADDITIONAL INFORMATION

REPLACING THE SD CARD (OPTIONAL)

Your doorbell comes with a 16 GB SD card pre-installed for storing video files. SD cards larger than 16 GB can also be used. To install a different SD card, follow the steps below.

1. Remove the faceplate attached on the doorbell to view the front panel and side panel of the doorbell.
2. Remove the card slot cover. The slot cover is on the right side of the doorbell with a vertical arrow on it.
3. Insert the new SD card into the card slot.
4. Place the slot cover back over the SD card and reattach the faceplate.



Note: Motion detection does not support recording without an SD card.

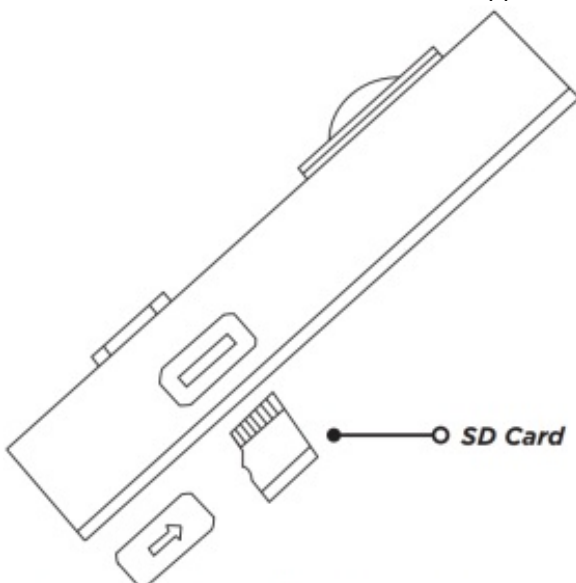


Figure 7: Installing the SD Card

CONNECTING THE DOORBELL TO AN NVR

After the doorbell has been set up in the Virtual Keypad App and after obtaining the IP address that your router has assigned to the doorbell, follow the NVR manufacturer recommended steps to add a camera to an NVR.

1. Choose **Manual** mode to add a camera.
2. Enter the IP address.
3. Set the protocol to **ONVIF**.
4. Leave the **Management Port** at the default **8000**, the **Channel Port** as the default **1**, and the **Transfer Protocol** as the default **Auto**.
5. The username is "admin". The password is a combination of the word "admin" followed by the verification code that is on the label of the doorbell located under the cover below the serial number. As an example, if the verification code is **ILGWQM** then the password would be **adminILGWQM**.

CHANGING SSID OR PASSWORD

1. Delete the doorbell from the Virtual Keypad App.
2. Remove the doorbell's cover and hold down the reset button for 25 seconds or until the doorbell audibly states, "doorbell is rebooting." The doorbell will go through its reboot process and announce when it is ready to be reconfigured.
3. Repeat instructions in Replace Existing Doorbell.

V-4060DB VIDEO DOORBELL

Specifications

Sensor and Lens:

Image Sensor: CMOS 2MP HD

Lens: f1.96 mm, F 2.2 180

Field of View: degrees (Horizontal), 96 degrees (Vertical)

Video Compression: H.264

Frame Rate: Up to 30 frames per second

Wireless Compatibility: 2.4 GHz

IR Distance: 16 ft

Network:

Wireless Compatibility: 2.4 GHz

Storage:

On-Board Storage: 16 GB SD card installed

Hardware:

Power Required: 16 VAC to 24 VAC

Power Consumption: Max 0.6 A

Working Temperature: -22 F to 122 F

Dimensions (LxWxH): 4.82" x 1.81" x 1.11"

Compatibility

Virtual Keypad App Version 6.18 or higher

Accessories

V-4060DB-VW: Vertical Wedge

V-4060DB-HW: Horizontal Wedge

V-4060DB-PK: Power Kit

V-4060DB-SILVER/10: Cover plate – Silver 10 pack

V-4060DB-WHITE/10: Cover plate – White 10 pack

V-4060DB-BLACK/10: Cover plate – Black 10 pack

V-4060DB-CHAR/10: Cover plate – Charcoal 10 pack

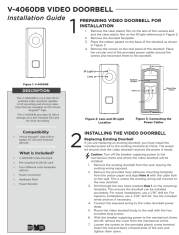
321: Plug-In Transformer

INTRUSION · FIRE · ACCESS · NETWORKS

2500 North Partnership Boulevard Springfield, Missouri 65803-8877



Documents / Resources



[DMP V-4060DB Video Door Bell](#) [pdf] Installation Guide
V-4060DB, Video Door Bell

Related Manuals / Resources



[Honeywell Door Bell E2692N User Guide](#)

Quick Start Guide E2692N DOORBELL Getting started
<http://livewell.honeywell.com> Trouble shooting livewell.honeywell.com
32323152-002 Rev.A



[UniFi UNVR-4 Network Video Recorder Installation Guide](#)

UniFi UNVR-4 Network Video Recorder

[Fanvil I32V Video Door Phone Installation Guide](#)

Video Door Phone Quick Installation Guide www.fanvil.com (1) Package Contents i32V Video Door Phone ...



[IKEA MORLIDEN Glass Door Installation Guide](#)

IKEA MORLIDEN Glass Door Installation Guide WARNING! Serious or fatal crushing injuries can occur from furniture falling down....

[Manuals+](#)

- [home](#)
- [privacy](#)